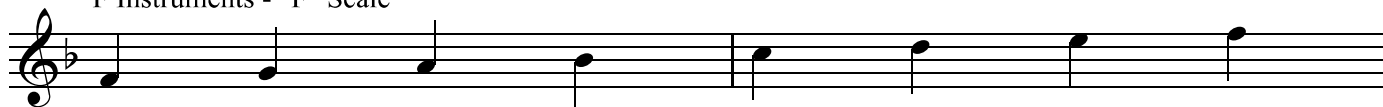


# Bb SIGHT-READING + RHYTHM EXERCISES

## Level 1

F Instruments - "F" Scale



All of the following exercises utilize notes from the key of Bb.

All exercises utilize whole notes and half notes only.

Write in the counts for each note.

For Half Notes, you will write the first number BELOW the note and the 2nd number ABOVE and to the right of the note.

For whole notes, you will write the first number BELOW the note followed by a line and the 2nd, 3rd and 4th numbers ABOVE and to the right of the note.

In 4/4 time, each measure is divided into 4 beats.

$\text{♩} = 2 \text{ beats}$      $\text{♩} = 4 \text{ beats}$

2 Half notes ( $\text{♩}$ ) would be counted : 1----3----. A whole note ( $\text{♩}$ ) would be counted: 1-----.

3 **A** 2 3 4 2 4 2 3 4 2 4 2 4 2 4 2 3 4 2 3 4

Musical staff A in 4/4 time, key of Bb. It contains 8 measures. The first four measures each contain two half notes. The last four measures each contain one whole note. Below the staff, rhythm counts are written: '1' below the first note, '1' below the second note, '3' above the second note, '1' below the third note, '1' below the fourth note, '3' above the fourth note, '1' below the fifth note, '3' above the fifth note, '1' below the sixth note, '3' above the sixth note, '1' below the seventh note, and '1' below the eighth note.

11 **B**

Musical staff B in 4/4 time, key of Bb. It contains 8 measures of music using half and whole notes.

19 **C**

Musical staff C in 4/4 time, key of Bb. It contains 8 measures of music using half and whole notes.

27 **D**

Musical staff D in 4/4 time, key of Bb. It contains 8 measures of music using half and whole notes.

35 **E**

Musical staff E in 4/4 time, key of Bb. It contains 8 measures of music using half and whole notes.

43 **F**

Musical staff F in 4/4 time, key of Bb. It contains 8 measures of music using half and whole notes.